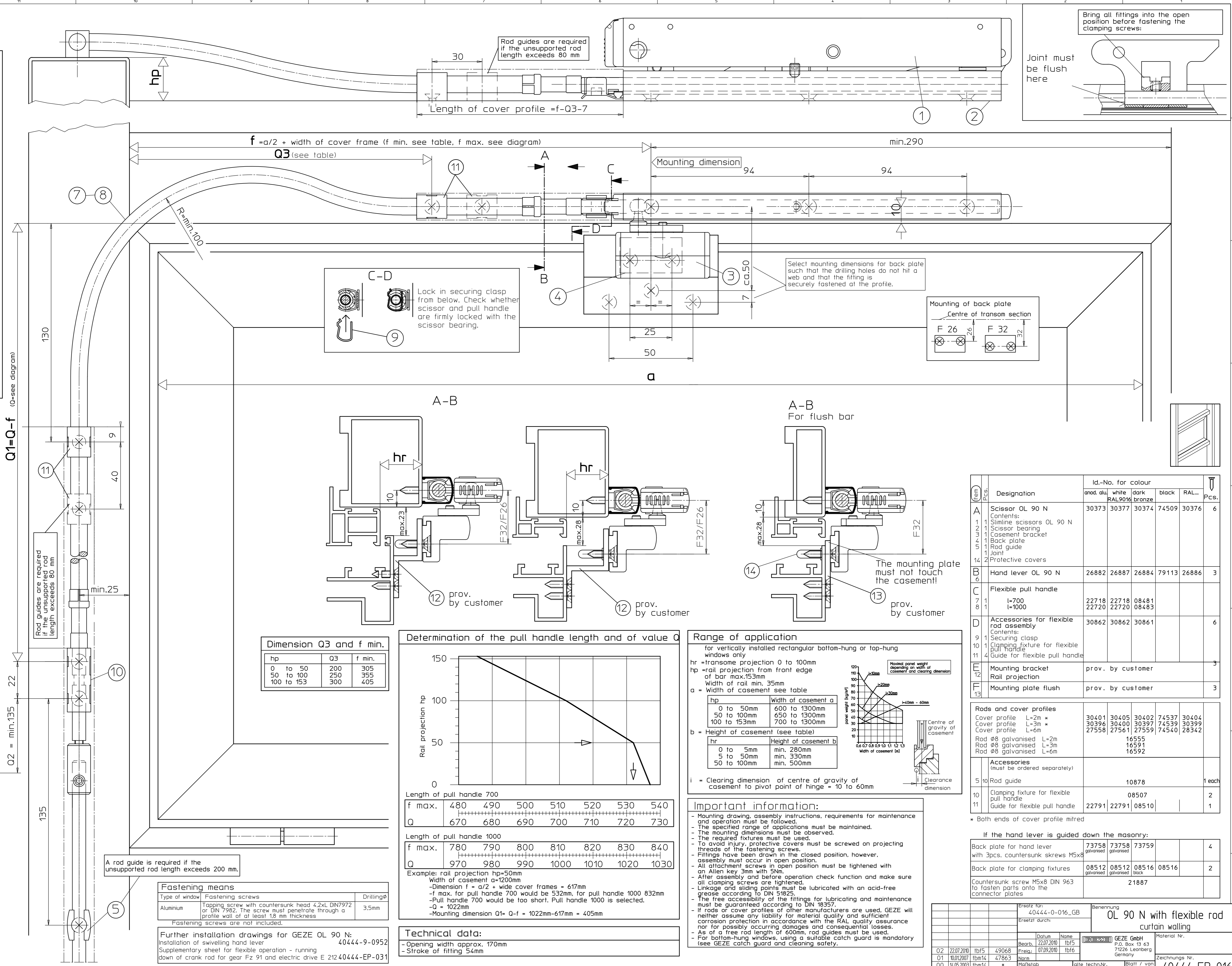
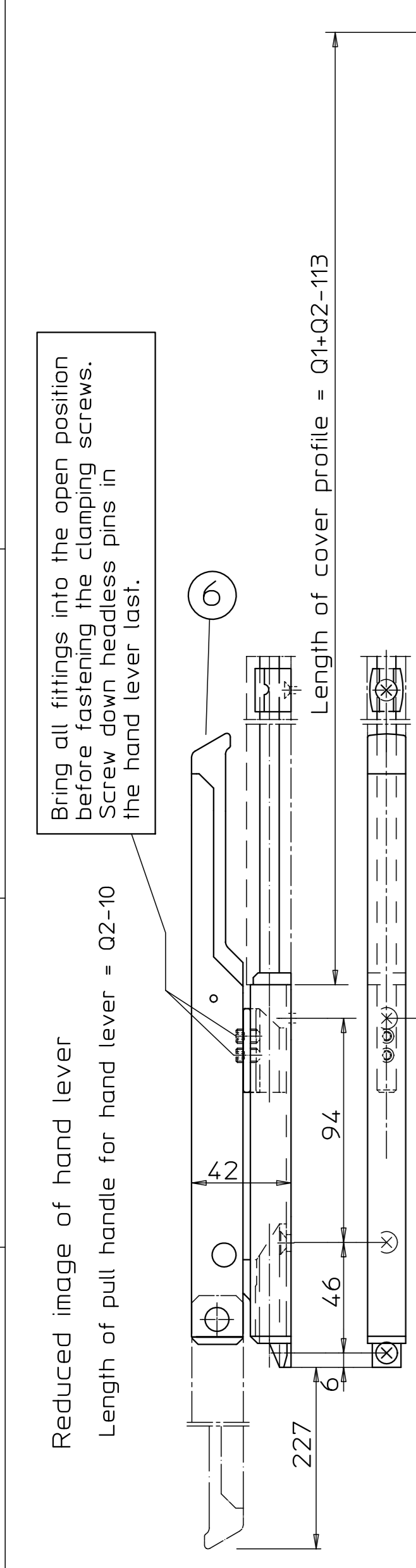
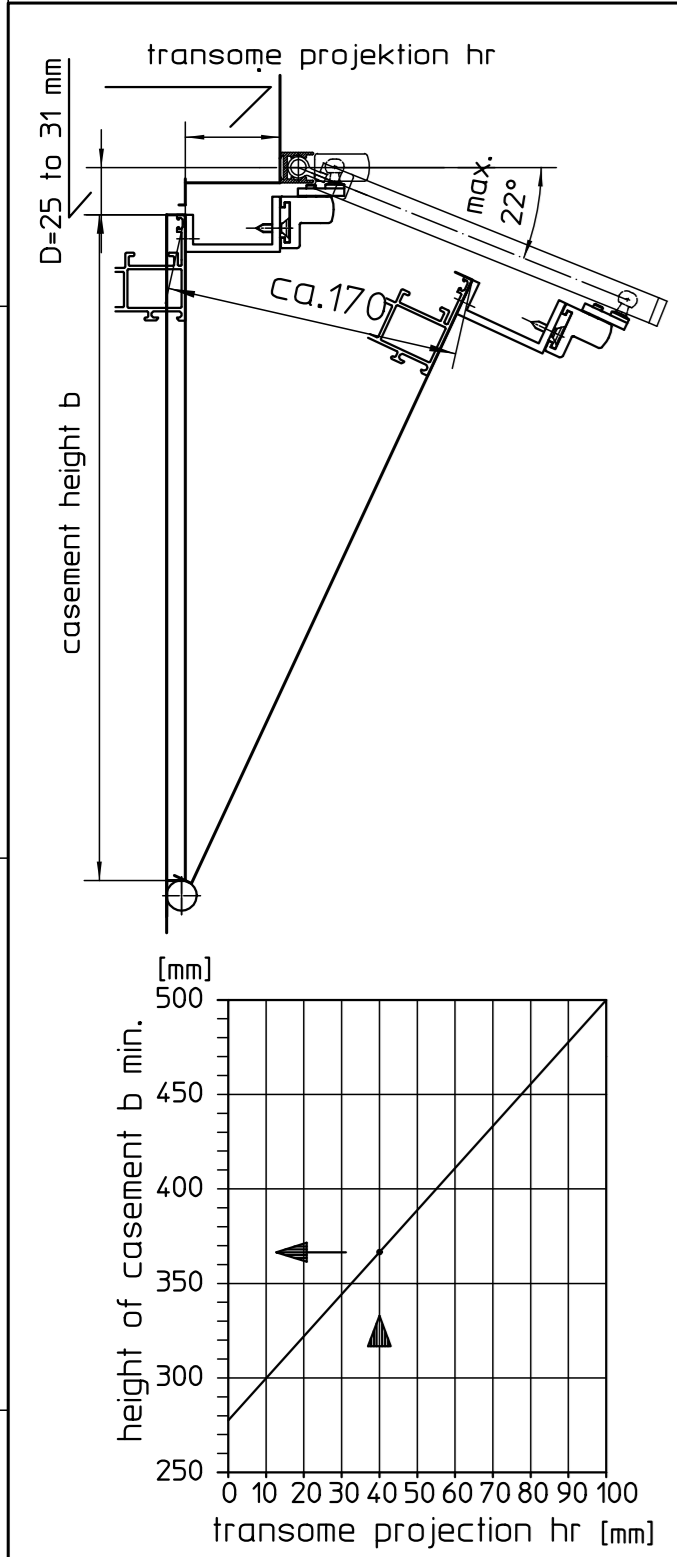
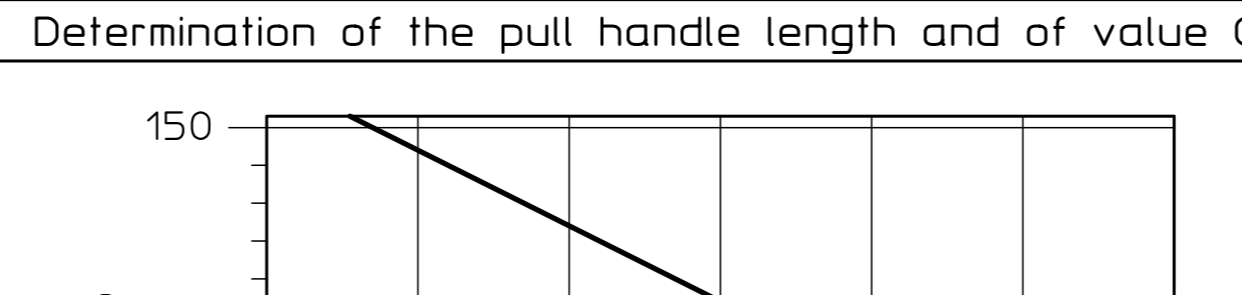


Diese Zeichnung entspricht dem Entwicklungsstand des Zeichnungs-
 dahnme bzw. der letzten Änderungsantrag. Aus der Benutzung der
 Zeichnung können keine Ansprüche, gleich welcher Art, hinsichtlich
 Schadenersatzansprüche, abgeleitet und gegen GEZE geltend
 gemacht werden. Die Zeichnung bildet unser Eigentum und ist
 für den Verfertiger der Zeichnung zu benutzen. Sämtliche
 aus der Zeichnung resultierenden Ansprüche zueinander
 sind vorbehalten. Änderungen von GEZE sind in dieser Zeichnung
 nicht dargestellt. GEZE ist für diese Zeichnung weder
 verantwortlich noch Dritten zugänglich gemacht werden.



Dimension Q3 and f min.

hp	Q3	f min.
0 to 50	200	305
50 to 100	250	355
100 to 153	300	405



Range of application

for vertically installed rectangular bottom-hung or top-hung windows only

hr = transome projection 0 to 100mm
 hp = rail projection from front edge of bar max. 153mm
 Width of rail min. 35mm
 a = Width of casement see table

hp	Width of casement a
0 to 50mm	600 to 1300mm
50 to 100mm	650 to 1300mm
100 to 153mm	700 to 1300mm

b = Height of casement (see table)

hr	Height of casement b
0 to 5mm	min. 280mm
5 to 50mm	min. 330mm
50 to 100mm	min. 500mm

i = Clearing dimension of centre of gravity of casement to pivot point of hinge = 10 to 60mm

Important information:

- Mounting drawing, assembly instructions, requirements for maintenance and operation must be followed.
- The specified range of applications must be maintained.
- The mounting dimensions must be observed.
- The required fixtures must be used.
- To avoid injury, protective covers must be screwed on projecting threads of the fastening screws.
- Fittings have been drawn in the closed position, however, assembly must occur in open position.
- All attachment screws in open position must be tightened with an Allen key 3mm with 5Nm.
- After assembly and before operation check function and make sure all clamping screws are tightened.
- Linkage and sliding points must be lubricated with an acid-free grease according to DIN 51825.
- The free accessibility of the fittings for lubricating and maintenance must be guaranteed according to DIN 18357.
- If rods or cover profiles of other manufacturers are used, GEZE will neither assume any liability for material quality and sufficient corrosion protection in accordance with the RAL quality assurance nor for possibly occurring damages and consequential losses.
- As of a free rod length of 600mm, rod guides must be used.
- For bottom-hung windows, using a suitable catch guard is mandatory (see GEZE catch guard and cleaning safety).

Item	Description	Id.-No. for colour				Pcs.	
Ref.		anod. alu.	white RAL9016	dark bronze	black	RAL...	
A	Scissor OL 90 N Contents: 1 Slimline scissors OL 90 N 2 Scissor bearing 3 Casement bracket 4 Back plate 5 Rod guide 6 Joint 7 Protective covers	30373	30377	30374	74509	30376	6
B	Hand lever OL 90 N	26882	26887	26884	79113	26886	3
C	Flexible pull handle l=700 l=1000	22718 22720	22718 22720	08481 08483			
D	Accessories for flexible rod assembly Contents: 9 Securing clasp 10 Clamping fixture for flexible pull handle 11 Guide for flexible pull handle	30862	30862	30861			6
E	Mounting bracket Rail projection						prov. by customer
F	Mounting plate flush						prov. by customer

Rods and cover profiles

Cover profile	L=2m *	30401	30405	30402	74537	30404
Cover profile L=3m *		30396	30400	30397	74539	30399
Cover profile L=6m		27558	27561	27559	74540	28342

Rod Ø8 galvanised L=2m: 16555
 Rod Ø8 galvanised L=3m: 16591
 Rod Ø8 galvanised L=6m: 16592

Accessories (must be ordered separately):

5	Rod guide		10878		1 each
10	Clamping fixture for flexible pull handle		08507		2
11	Guide for flexible pull handle	22791	22791	08510	1

* Both ends of cover profile mitred

If the hand lever is guided down the masonry:

Back plate for hand lever with 3pcs. countersunk screws M5x8	73758 galvanised	73758 galvanised	73759		4
Back plate for clamping fixtures	08512 galvanised	08512 black	08516	08516	2
Countersunk screw M5x8 DIN 963 to fasten parts onto the connector plates			21887		

Fastening means

Type of window	Fastening screws	DrillingØ
Aluminium	Tapping screw with countersunk head 4.2xL DIN972 or DIN 7982. The screw must penetrate through a profile wall of at least 1.8 mm thickness.	3.5mm

Fastening screws are not included.

Further installation drawings for GEZE OL 90 N:
 Installation of swivelling hand lever: 40444-9-0952
 Supplementary sheet for flexible operation - running down of crank rod for gear FZ 91 and electric drive E 212 40444-EP-031

Technical data:

- Opening width approx. 170mm
- Stroke of fitting 54mm

Ersatz für:		Benennung	
40444-0-016_GB		OL 90 N with flexible rod curtain walling	
Ersetzt durch:			
Datum		Name	
Bearb.	22.07.2010	tbf5	
Freig.	07.09.2010	tbf6	
Norm		Norm	
		47863	
Maßstab		Maßstab	
		*	
alte techn.Nr.		Blatt / von	
		1 / 1	

GEZE GmbH
 P.O. Box 13 63
 71226 Leonberg
 Germany

Material Nr.:

Zeichnungs-Nr.:

40444-EP-016