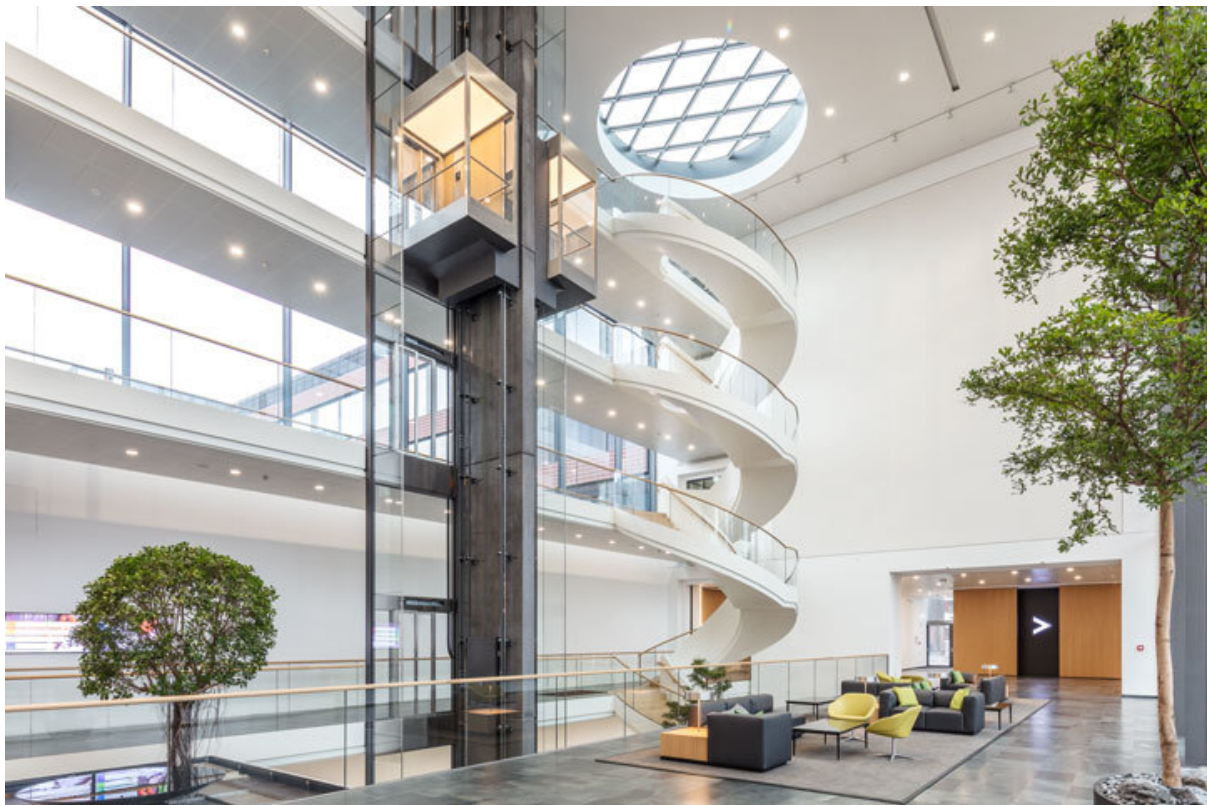


# Product data sheet

# Door transmission

# protective hose



Flexible metal hose for protected transition from the cable to door systems

## AREAS OF APPLICATION

→ Protects cables at transitions between the door and the drive, frame, or wall

# Door transmission protective hose



## PRODUCT FEATURES

- Interior diameter of 7 mm
- Including fastening caps for mounting on door frame and door leaf
- Rust-resistant, flexible metal hose

## TECHNICAL DATA

Productname	Door transmission protective hose
Type of installation	Surface-mounted
Material	Brass

## VARIANTS / ORDER INFO

Designation	Description	Ident-No.	Type of installation
Door transmission cable for sensor	Length 300 mm	025901	Surface-mounted