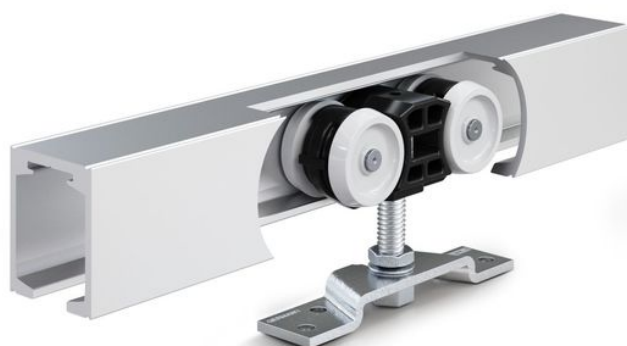


Product data sheet

Perlan 140 wood



Sliding door fitting system for timber, plastic, or metal doors
with a leaf weight of 140 kg

AREAS OF APPLICATION

- Frequently used interior sliding doors
- Living, office, and conference areas as well as hotels
- Installation of fittings in all visible areas
- Single and multiple-leaf sliding doors

Perlan 140 wood



PRODUCT FEATURES

- Sliding door fitting for leaf weights of up to 140 kg
- For leaves made of wood, plastic, or metal
- With one or tow-sided draw-in damper
- Adjustable height compensation levels out unevenness between the ceiling and the track
- Precision ball bearings in the roller carriages offer very smooth sliding action
- Tested for durability in accordance with DIN EN 1527 over 100,000 test cycles
- Retractable suspension plates allow for the door to be installed with a small clearance between the track and the upper edge of the door

TECHNICAL DATA

Productname	Perlan 140 wood
Leaf material	Wood, Metal
Leaf weight (max.)	140 kg
Number of leaves	1-leaf
Leaf width (min.)	500 mm
Leaf width (max.)	1640 mm
Leaf height (max.)	3500 mm
Leaf thickness from	22 mm
Leaf thickness to	40 mm
Track geometry	straight
EN 1670 Corrosion resistance	2 (acc. to EN 1670: Class 0 = none defined, Class 1 = low, Class 2 medium, Class 3 = high, Class 4 = very high, Class 5 = extraordinary)
EN 1527 Continuous function	100,000 test cycles
Type of installation	Wall, Ceiling
DIN direction	left / right
Manual operation	Yes
Surface	anodised
Colour	EV1