

Product data sheet

TZ 320 UP control unit

*



Door control unit for universally applicable control and protection of networked emergency exits

TZ 320 UP control unit *



AREAS OF APPLICATION

- EltVTR-compliant protection of an emergency exit against unauthorised access
- Can be used on single and double leaf doors
- Connectivity via bus enables e.g. interlocking door system control, forwarding of alarms, connection to building management system
- Can be combined with motor locks and swing door drives
- Realisation of a bidirectional emergency exit
- Flush-mounted installation ensures seamless integration into the building

PRODUCT FEATURES

- Flat impact cover enables fast and safe activation of the illuminated emergency push button in panic situations
- Coloured connectors facilitate electrical connection
- Three freely configurable inputs and two freely configurable outputs offer numerous possibilities for additional components
- Number of inputs and outputs can be expanded using the IO 420 interface module or the KL 220 clamping box
- Designed for installation in 55-type flush-mounted ranges
- Can be mounted in flush-mounted sockets 62.5 mm deep

TECHNICAL DATA

Productname	TZ 320 UP control unit *
Type of installation	Flush-mounted installation
Service temperature	-10 – 55 °C
IP rating	IP30
Operating voltage	24 V DC
Power consumption	100 mA
Supply voltage	24 V DC
Contact rating	30 V / 1 A
Sabotage contact	Yes
Number of inputs	3 Stk.
Number of outputs	2 Stk.
Emergency push button	Yes
Visual display	yes
Volume	75 db
With ribbon cable	Yes
Parameter setting	ST 220 service terminal

TZ 320 UP control unit *



Conforms to the EltVTR (guidelines for electronic locking systems)

Yes

Conforms to EN 13637

Yes

ACCESSORIES

GIRA FRAME E2 *

Flush-mounted frame for the installation of flush-mounted components in GIRA E2 design



KL 220 AP *

Terminal box for extending the number of analogue inputs and outputs for a TZ 32x



Designation	Description	Ident-No.	Colour	Dimensions	Operating voltage
Terminal box KL 220 surface-mounted installation	Plastic housing / W x H x D: 113 x 113 x 58 mm / IP rating: IP54 / with sabotage contact	087262	grey	113 x 113 x 58 mm	24 V DC

RP 220 RELAY BOARD *

Relay board for universal use for the generation and switching of potential-free contacts



Designation	Description	Ident-No.	Dimensions	Number of relays
RP 220 relay board	for universal use / 2 potential-free changeover contacts / Switching load: 30 V / 1 A / Operating voltage: 24 V DC / Current consumption: 10 mA / W x H x D: 28 x 25 x 18 mm	102355	28 x 25 x 18 mm	2 Stk.

TZ 320 UP control unit *



NOT 220 AP *

Emergency exit system emergency push button for mains voltage shut-off in the case of an emergency or during maintenance work, surface-mounted installation



Designation	Description	Ident-No.	Colour	Dimensions	Operating voltage
NOT 220 AP emergency stop switch, IP65 *	in plastic casing IP65 / 94 x 94 x 122 mm / with emergency exit sign arrow downwards / Operating voltage: 24 V DC / Contact rating: 3A, 250 V / 1 normally closed contact	076777	grey	94 x 94 x 122 mm	24 V DC

KEY SWITCH 220 UP *

Key switch for authorised activation and changing the mode of operation of automatic doors, flush-mounted



Designation	Description	Ident-No.	Colour	Type of installation
SCT 220 key switch, Jung ST 550 *	Two-sided switching operation, with Euro profile half cylinder and three keys / with 1-gang frame	094169	alpine white	Flush-mounted installation
SCT 220, GIRA E2 key switch	Two-sided switching operation, with Euro profile half cylinder and three keys	094171	pure white matt	Flush-mounted installation
SCT 220, Jung LS 990 key switch *	Two-sided switching operation, with Euro profile half cylinder and three keys / with Euro profile half cylinder 30/10 / with single frame / IP rating: IP20 / W x H x D: 81 x 81 x 62.5	094170	Stainless steel	Flush-mounted installation
SCT 220, GIRA E2 key switch *	Switch programme GIRA E2 / with Euro profile half cylinder 30/10 / with single frame / IP rating: IP20 / W x H x D: 81 x 81 x 62.5	094012	pure white matt	Flush-mounted installation
SCT 220, Jung LS 990 key switch *	Two-sided switching operation, with Euro profile half cylinder and three keys / with Euro profile half cylinder 30/10 / with single frame / IP rating: IP20 / W x H x D: 81 x 81 x 62.5	089345	Stainless steel	Flush-mounted installation

TZ 320 UP control unit *



KEY SWITCH 320 UP *

Key switch for authorised activation and for changing the mode of operation of automatic doors, flush-mounted



Designation	Description	Ident-No.	Colour	Operating voltage	Type of installation
SCT 320 UP, key switch	Two-sided switching operation, with Euro profile half cylinder and three keys / with sabotage contact / with ribbon cable / Contact rating: 24 V DC, 1A / Area of application: dry rooms / Without frame	132278	anthracite	24 V DC	Flush-mounted installation
SCT 320 UP, key switch	Two-sided switching operation, with Euro profile half cylinder and three keys / with sabotage contact / with ribbon cable / Contact rating: 24 V DC, 1A / Area of application: dry rooms / Without frame	131984	alpine white	24 V DC	Flush-mounted installation
SCT 320 UP, key switch	Two-sided switching operation, with Euro profile half cylinder and three keys / with sabotage contact / with ribbon cable / Contact rating: 24 V DC, 1A / Area of application: dry rooms / Without frame	130370	pure white matt	24 V DC	Flush-mounted installation

SCT 222 *

Key switch for authorised activation and changing the mode of operation of automatic doors, surface and flush-mounted



Designation	Description	Ident-No.	Colour	Dimensions	Type of installation
SCT 222 key switch with LEDs *	Two-sided switching operation, with Euro profile half cylinder and three keys / with aluminium front plate / right LED red/green, left LED yellow / Operating voltage 24 V DC / Current consumption: 30 mA / IP rating: IP54 / Dimensions: / W x H front plate: 100 x 110 mm / W x H x D flush-mounted housing: approx. 70 x 80 x 48 mm	100064	silver-coloured	100 x 110 x 48 mm	Flush-mounted installation
SCT 222 key switch with LEDs *	Two-sided switching operation, with Euro profile half cylinder and three keys / with aluminium front plate / right LED red/green, left LED yellow / Operating voltage 24 V DC / Current consumption: 30 mA / IP rating: IP54 / Dimensions: / W x H x D: 70 x 80 x 48	100065	silver-coloured	70 x 80 x 48 mm	Surface-mounted

TZ 320 UP control unit *



SLE 220 *

Warning light for reinforcing an optical alarm signal



Designation	Description	Ident-No.	Colour	Supply voltage	Operating voltage
SLE 220 indicator lamp flush mounting *	Reflector colour: green / Operating voltage: 24 V DC / Switch programme: Jung AS 500, alpine white	115936	green	24 V DC	24 V DC
SLE 220 indicator lamp flush mounting *	Reflector colour: red / Operating voltage: 24 V DC / Switch programme: Jung AS 500, alpine white	115934	red	24 V DC	24 V DC

T 320 AP TERMINAL *

Slave control unit for bidirectional escape routes with a TZ 320 or TZ 322 with integrated key switch



Designation	Description	Ident-No.	Colour	Dimensions	Operating voltage
T 320 AP terminal *	Consisting of: / Control unit with emergency push button, / Key switch with Euro profile half cylinder / Emergency exit sign non-illuminated / Operating voltage 24 V DC	141031	green	77 x 197 x 88 mm	24 V DC

ST 220

Service terminal for the wireless and wired parameter setting of GEZE door and window products



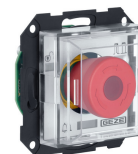
Designation	Description	Ident-No.	Colour	Dimensions	Operating voltage
ST 220 service terminal	For parameter setting and diagnosis for TZ 320, TE 220, automatic door systems, drives from the IQ windowdrive series and THZ N4, THZ Comfort N4, battery operation with 4x AAA cells (not supplied by GEZE), plain text display on illuminated panel, keypad for operation / Parameter changes to GEZE systems may only be carried out by experts who have been authorised by the manufacturer	087261	blue	80 x 125 x 37 mm	24 V

TZ 320 UP control unit *



T 320 UP CONTROL UNIT *

Slave control unit for bidirectional escape routes with a TZ 320 or TZ 322



Designation	Description	Ident-No.	Operating voltage	Type of installation
T 320 UP control unit *	(no complete flush-mounting set available. Made up of individual components) / Control unit with emergency push button / Impact cover made of transparent plastic / For switch programmes in System 55 / Installation in flush-mounted sockets 62.5 mm deep / Operating voltage: 24 V DC / Current consumption: 100 mA	140999	24 V DC	Flush-mounted installation

NOT 320 SURFACE MOUNTED *

Emergency exit system emergency push button for mains voltage shut-off in the case of an emergency or during maintenance work, surface-mounted installation



Designation	Description	Ident-No.	Colour	Operating voltage	Type of installation
NOT 320 AP emergency push button, Jung AS 500 *	with surface mounted cap Jung AS 500 and single frame / Impact cover made of transparent plastic / Impact cover dimensions 55 x 55 mm / Operating voltage: 24 V DC / Current consumption: 30 mA / 1 normally closed contact / 1 normally open contact / Contact current capacity: 1A, 30 V	137967	alpine white	24 V DC	Surface-mounted

POWER SUPPLY NT 1.1 A-24 V UP *

25 V power supply unit for flush-mounted installation



Designation	Description	Ident-No.	Colour	Supply voltage	Dimensions
Power supply NT 1.1 A-24 V UP	Installation in flush-mounted socket	151426	black	230 V AC	54 x 54 x 32 mm

TZ 320 UP control unit *



DUMMY COVER WITH SUPPORTING RING, GIRA E2 *

Flush-mounted frame for the installation of flush-mounted components in GIRA E2 design



Designation	Ident-No.	Colour	Dimensions	Type of installation
Dummy cover with supporting ring, Gira E2 *	142492	anthracite	55 x 55 mm	Surface-mounted
Dummy cover with supporting ring, Gira E2 *	093997	pure white matt	55 x 55 mm	Surface-mounted

* The products designated above may vary in form, type, characteristics, function, or availability depending on the country. Please get in touch with your GEZE contact person if you have any questions.